

Graphene Oxide modified Screen-Printed Electrodes

Refs. 110GPHOX
X1110GPHOX



Graphene Oxide modified
Screen-Printed Electrode
Ref. 110GPHOX



Graphene Oxide modified
Dual Screen-Printed Electrode
Ref. X1110GPHOX

These disposable Screen-Printed Carbon Electrodes (SPCEs) modified with monolayer Graphene Oxide as a carbon based nanomaterial are designed for the development of (bio)sensors with an enhanced electrochemical active area.

Ceramic substrate: L33 X W10 X H0.5 mm

Electric contacts: Silver

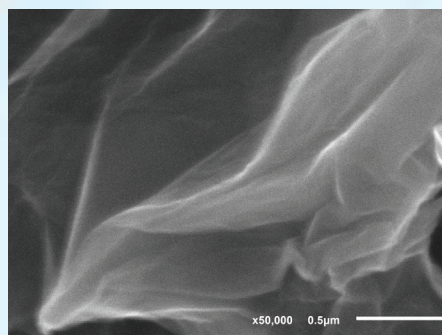
The electrochemical cell consists on:

Working electrode(s): GPHOX / Carbon

Counter electrode: Carbon

Reference electrode: Silver

Graphene Oxide SPCEs are commercialized in 50 units packs. Store at room temperature in a dry place.



SEM image of the working electrode modified with monolayer Graphene Oxide

Also, specific connectors that act as an interface between the screen-printed electrode and any potentiostat (ref. DSC or CAC) and other accessories are available at [DropSens](#).

Related products



110GPH



DSC



CAST



FLWCL



SPELEC



STAT400

Full Catalogue



Parque Tecnológico de Asturias - Edif. CEEI. 33428 LLanera (Asturias). Spain
(+34) 985 27 76 85 - info@dropsens.com - www.dropsens.com

Contact Form

