

## Polyaniline modified Screen-Printed Carbon Electrode

Refs. 110PANI  
X1110PANI

Polyaniline modified  
Screen-Printed Carbon  
electrode  
Ref. 110PANI



Polyaniline modified  
Dual Screen-Printed  
carbon electrode  
Ref. X1110PANI

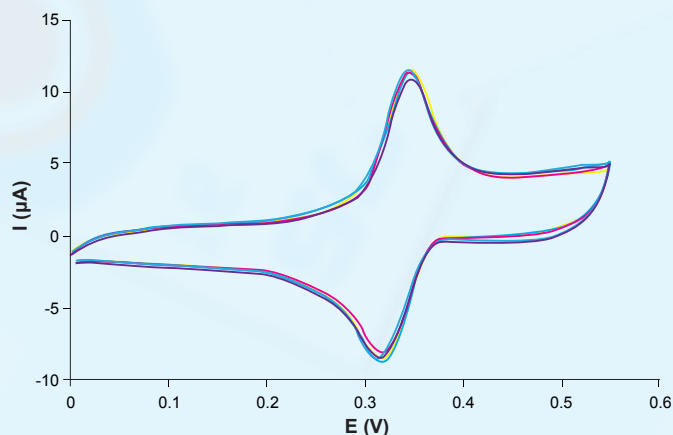


These disposable **Screen-Printed Carbon Electrodes** (SPCEs) modified with **Polyaniline** (PANI) are designed for the development of (bio) sensors with an enhanced electrochemical active area.

*Ceramic substrate:* L33 x W10 x H0.5 mm  
*Electric contacts:* Silver

The electrochemical cell consists on:  
*Working electrode(s):* PANi / Carbon  
*Auxiliary electrode:* Carbon  
*Reference electrode:* Silver

**PANi SPCEs** are commercialised in 50 units packs. Store at room temperature, protected from light in a dry place.



Cyclic voltammograms of  $1 \cdot 10^{-4}$  M Dopamine in 0.01M HCl at 50 mV/s. Samples = 5 PANi SPCEs (ref. DRP-110PANI). RSD% = 4%

Also, specific **connectors** that act as an interface between the screen-printed electrode and any potentiostat (ref. **DSC**, **CAC**) and other accessories are available at [DropSens](http://DropSens.com).

### Related products



DSC



CAC



FLWCL



CELL



STAT400



STAT8000

Full Catalogue



Parque Tecnológico de Asturias - Edif. CEEI. 33428 LLanera (Asturias). Spain  
(+34) 985 27 76 85 - info@dropsens.com - www.dropsens.com

Contact Form

