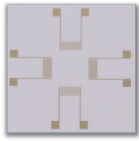


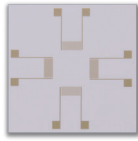
# Four gold Multi-interdigitated Electrodes over white plastic substrate

01

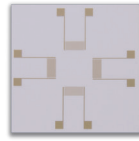
Ref. PW-4XIDEAU20, PW-4XIDEAU30, PW-4XIDEAU40, PW-4XIDEAU50, PW-4XIDEAU60, PW-4XIDEAU70



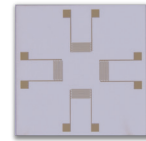
Reference: PW-4XIDEAU20  
Substrate: plastic white  
Material: gold  
Lines/gaps: 20 µm



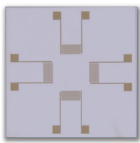
Reference: PW-4XIDEAU30  
Substrate: plastic white  
Material: gold  
Lines/gaps: 30 µm



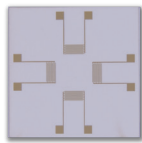
Reference: PW-4XIDEAU40  
Substrate: plastic white  
Material: gold  
Lines/gaps: 40 µm



Reference: PW-4XIDEAU50  
Substrate: plastic white  
Material: gold  
Lines/gaps: 50 µm



Reference: PW-4XIDEAU60  
Substrate: plastic white  
Material: gold  
Lines/gaps: 60 µm



Reference: PW-4XIDEAU70  
Substrate: plastic white  
Material: gold  
Lines/gaps: 70 µm

**Multi-electrode** is formed by four gold interdigitated systems in a single piece over plastic substrate (IDEs). These Interdigitated Electrodes are composed by two interdigitated electrodes with two connection tracks, all made of gold, **on a plastic and flexible substrate**. These IDEs offer several advantages, such as working with low volumes of sample and avoiding polishing of solid electrodes.

[www.metrohm-dropsens.com](http://www.metrohm-dropsens.com)

# Four gold Multi-interdigitated Electrodes over plastic substrate

02

**Ref. PW-4XIDEAU20, PW-4XIDEAU30, PW-4XIDEAU40, PW-4XIDEAU50, PW-4XIDEAU60, PW-4XIDEAU70**

The interdigitated configuration typically **enhances sensitivity and detection limits**. They are suitable for decentralized assays, to develop specific (bio)sensors, gas sensors, conductivity measurements and other electrochemical studies.

The dimensions for bands/gaps are 20, 30, 40, 50, 60 and 70  $\mu\text{m}$ .

Plastic substrate dimensions: L 16 mm x W 16 mm x H 0.175mm

Interdigitated electrodes are commercialised in 50 units packs. They should be stored at room temperature, protected from light in a dry place. Connection should be performed by the user.

[www.metrohm-dropsens.com](http://www.metrohm-dropsens.com)