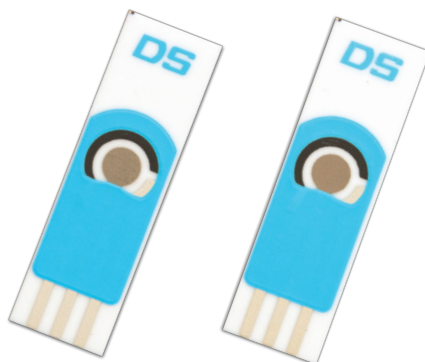


# Thick-Film Electrodes

01

Refs. **CR10, SN10, MO10, TA10, ST10, BI10, SB10, NI10, AL10, PB10, W10, CST10**



Disposable **Thick-Film working electrodes** with screen-printed auxiliary and reference electrodes. Suitable for working with microvolumes and ideal for decentralized assays or to develop specific (bio)sensors. Useful for undergraduate lab to avoid tedious polishing of solid electrodes.

Ceramic substrate: L33 x W10 x H0.5 mm

Electric contacts: Silver

The electrochemical cell consists on:

Working electrode: Bismuth, Antimony, Chromium, Nickel, Tin, Aluminium, Molybdenum, Lead, Tantalum, Tungsten, Steel, Carbon Steel, Cobalt. (4 mm diameter)

Auxiliary electrode: Carbon

Reference electrode: Silver

**Thick-Film electrodes** are commercialised in 20 units sets individually packaged. They should be stored at room temperature in a dry place.



Also, specific **connectors** that act as an interface between the screen-printed electrode and any potentiostat (refs. DSC, CAC) and other accessories are available at [Metrohm DropSens](#).

# Thick-Film Electrodes

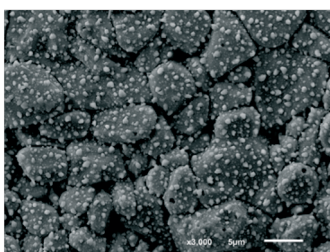
02

Refs. CR10, SN10, MO10, TA10, ST10, BI10, SB10, NI10, AL10, PB10, W10, CST10

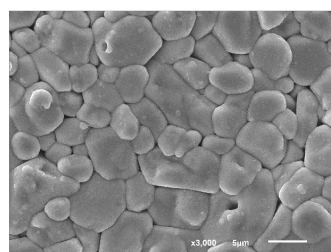
General geometry and Working electrode SEM images



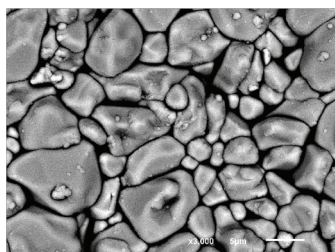
General geometry,  
actual size



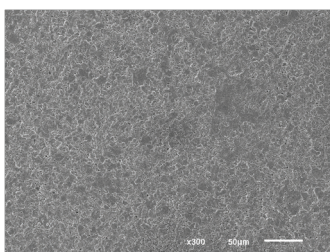
Ref. BI10 (Bismuth)



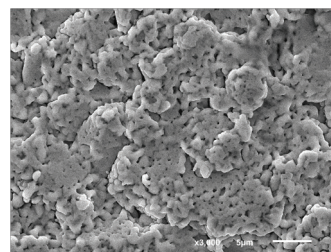
Ref. SB10 (Antimony)



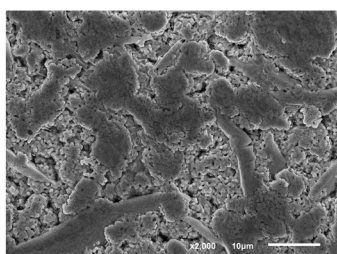
Ref. CR10 (Chromium)



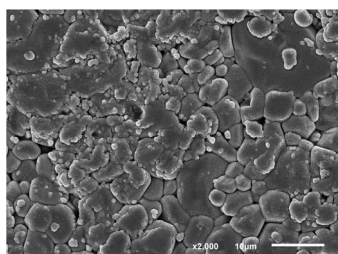
Ref. NI10 (Nickel)



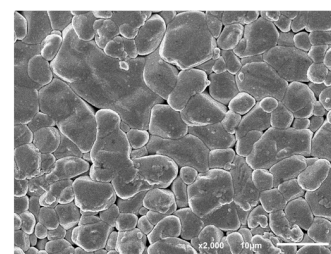
Ref. SN10 (Tin)



Ref. PB10 (Lead)



Ref. ST10 (Steel)



Ref. W10

[www.metrohm-dropsens.com](http://www.metrohm-dropsens.com)