

Screen-Printed Gold Electrodes

Refs.	220AT	220BT
	C220AT	C220BT
	C223AT	C223BT



220AT - High temperature curing ink, WE 4 mm.



C223AT - High temperature curing ink, WE 1.6 mm.



C220AT - High temperature curing ink, WE 4 mm. Work in solution.



220BT - Low temperature curing ink, WE 4 mm.



C223BT - Low temperature curing ink, WE 1.6 mm.



C220BT - Low temperature curing ink, WE 4 mm. Work in solution.

Disposable **Gold Electrodes** are ideal for working with microvolumes, (refs. 220AT, 220BT, C223AT, C223BT) or by dipping them in solution (refs. C220AT, C220BT). Suitable for decentralized assays or to develop specific (bio)sensors.

C220AT and **C220BT** are specifically designed to work in solution by entirely immersing sensing area.

Also useful for undergraduate lab to avoid tedious polishing of solid electrodes.

Ceramic substrate: L33 x W10 x H0.5 mm

Electric contacts: Silver

The electrochemical cell consists of:

Working electrode: Gold

Auxiliary electrode: Gold

Reference electrode: Silver

Working electrode is available in two sizes: 4 mm diameter (refs. 220AT, C220AT, 220BT, C220BT) or 1.6 mm diameter (refs. C223AT, C223BT).

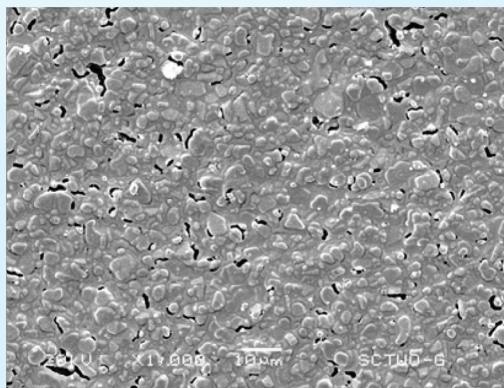
Screen-Printed Gold Electrodes

Refs.	220AT	220BT
	C220AT	C220BT
	C223AT	C223BT

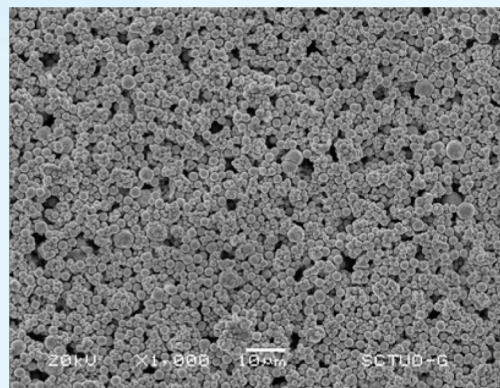
Electrodes screen-printed with high (AT) and low (BT) temperature curing inks which may have different properties depending on the application.

SEM images of working electrode

AT Models



BT Models



Screen-Printed Gold Electrodes are commercialised in 75 units packs. They should be stored at room temperature, protected from light in a dry place.

Also, specific **connectors** that act as an interface between the screen-printed electrode and any potentiostat (refs. DSC, CAC) and other accessories are available at [DropSENS](https://www.dropSENS.com).

Related products



8X220AT



CAC



FLWCL



CELL



STAT400



STAT8000



SPELEC

Full Catalogue



Contact Form

